

**NEW**

Roxtec ComSeal™ LW 6, 12, 12 FL 21 and 16

– CABINET SEALS FOR QUICK INSTALLATION

Complete sealing solution

The Roxtec ComSeal™ LW is an innovative cable entry solution for cabinets. The frames in the product family are made of aluminum and the solutions are approved for IP 44.

Supplied as ready-made kits

The seals are supplied as kits, including sealing modules which are adaptable to cables of different sizes. This simplifies planning, purchasing and installation.

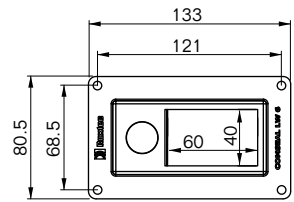
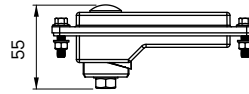
Quick installation

The seals can be attached either to the inside or the outside of a cabinet. This compensates for interfering equipment in cramped spaces and makes installation easy.

BENEFITS

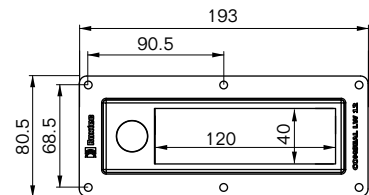
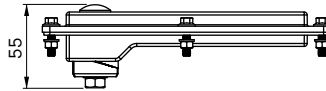
- Easy to use
- Area-efficient
- Approved for IP 44
- UL certified 3R
- Version for the FL 21 cut-out
- Multidiameter™ by Roxtec – adaptability through modules with removable layers

Roxtec ComSeal™ LW 6



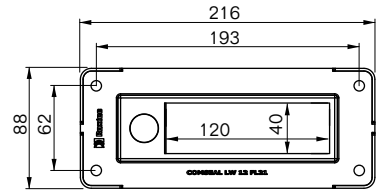
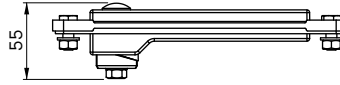
Kit	Multidiameter™ range and number of cables/pipes			Weight		Holecut width x length (mm)	Art No.
	0+3.5-10.5 mm 0+0.138-0.413" (EM 13.3w40)	0+3.5-16.5 mm 0+0.138-0.650" (EM 20w40)	0+9.5-32.5 mm 0+0.374-1.280" (EM 40 10-32)	(kg)	(lb)		
ComSeal™ LW 6/3		2 cables/pipes	1 cable/pipe	0.322	0.710	109x56	107788
ComSeal™ LW 6/6		6 cables/pipes		0.322	0.710	109x56	107789
ComSeal™ LW 6/12	12 cables/pipes			0.322	0.710	109x56	107790

Roxtec ComSeal™ LW 12



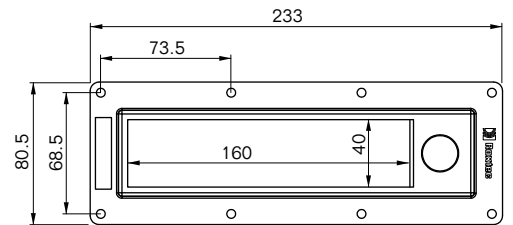
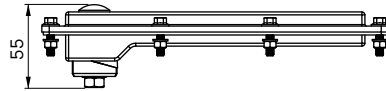
Kit	Multidiameter™ range and number of cables/pipes			Weight		Holecut width x length (mm)	Art No.
	0+3.5-10.5 mm 0+0.138-0.413" (EM 13.3w40)	0+3.5-16.5 mm 0+0.138-0.650" (EM 20w40)	0+9.5-32.5 mm 0+0.374-1.280" (EM 40 10-32)	(kg)	(lb)		
ComSeal™ LW 12/3			3 cables/pipes	0.445	0.981	169x56	107791
ComSeal™ LW 12/6		4 cables/pipes	2 cables/pipes	0.445	0.981	169x56	107792
ComSeal™ LW 12/9		8 cables/pipes	1 cable/pipe	0.445	0.981	169x56	107793
ComSeal™ LW 12/12	12 cables/pipes			0.445	0.981	169x56	108020

Roxtec ComSeal™ LW 12 FL 21



Kit	Multidiameter™ range and number of cables/pipes			Weight		Holecut width x length (mm)	Art No.
	0+3.5-10.5 mm 0+0.138-0.413" (EM 13.3w40)	0+3.5-16.5 mm 0+0.138-0.650" (EM 20w40)	0+9.5-32.5 mm 0+0.374-1.280" (EM 40 10-32)	(kg)	(lb)		
ComSeal™ LW 12/3 FL 21			3 cables/pipes	0.488	1.076	169x56	107799
ComSeal™ LW 12/6 FL 21		4 cables/pipes	2 cables/pipes	0.488	1.076	169x56	107800
ComSeal™ LW 12/9 FL 21		8 cables/pipes	1 cable/pipe	0.488	1.076	169x56	107802
ComSeal™ LW 12/12 FL 21		12 cables/pipes		0.488	1.076	169x56	108018

Roxtec ComSeal™ LW 16



Kit	Multidiameter™ range and number of cables/pipes			Weight		Holecut width x length (mm)	Art No.
	0+3.5-10.5 mm 0+0.138-0.413" (EM 13.3w40)	0+3.5-16.5 mm 0+0.138-0.650" (EM 20w40)	0+9.5-32.5 mm 0+0.374-1.280" (EM 40 10-32)	(kg)	(lb)		
ComSeal™ LW 16/4			4 cables/pipes	0.536	1.180	209x56	107794
ComSeal™ LW 16/7		4 cables/pipes	3 cables/pipes	0.536	1.180	209x56	107795
ComSeal™ LW 16/10		8 cables/pipes	2 cables/pipes	0.536	1.180	209x56	107796
ComSeal™ LW 16/16		16 cables/pipes		0.536	1.180	209x56	107797

Each Roxtec ComSeal™ LW kit consists of:

- Roxtec ComSeal™ LW frame
- Roxtec EM modules
- Screws, nuts and washers
- Assembly gel bag 10 ml
- Gasket



Each Roxtec ComSeal™ LW FL 21 kit consists of:

- Roxtec ComSeal™ LW FL 21 frame
- Roxtec EM modules
- Screws, nuts and washers
- Assembly gel bag 10 ml
- O-rings
- Gasket



Roxtec International AB
Box 540, 371 23 Karlskrona, SWEDEN
PHONE +46 455 36 67 00, FAX +46 455 820 12
EMAIL info@roxtec.com, www.roxtec.com